

# Pre-Exposure Prophylaxis

## Implementation & Maintenance

For specifics & details click [here](#)

### PrEP is a **program** not just a medication

#### The most successful PrEP programs include:

- Outreach, education, counseling and support
- Peer navigation
- Community engagement
- Cultural competency
- Advocacy and policy change
- Linkage to social programs for healthcare access
- Non-stigmatizing and gender-inclusive language

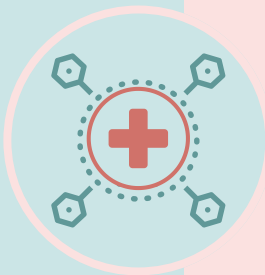


#### Different program models:

- Clinic-based (traditional)
- Telemedicine
- Pharmacy-based

#### No matter which program model is employed, there must be capability for:

- HIV testing: every 3 mos. for orals, every 2 mos. for injections
- Kidney testing (every 6 mos. for oral PrEP)
- Every 2 mos. injection schedule for those on cabotegravir
- Pregnancy testing
- STI testing at each visit
- Addressing general health needs either directly or by referral



#### Helpful Hints:

- Recruit culturally competent staff
- Ensure that the physical environment normalizes sexual health & minimizes stigma
- A close relationship with one or more pharmacies is key
- Mail order delivery is often required
- Work with your EMR to optimize efficiency
- Create appropriate "smart sets" in your EMR system
- Telehealth is an essential option for many PrEP users
- Smart marketing may increase utilization

